

Mod.

# CPR-RP

Getto singolo, quadrante semi-asciutto, rulli protetti  
Single jet, semi-dry dial, protected rolls



Disponibile versione  
acqua calda 30-90°C  
Available version  
for hot water 30-90°C

## ITA mod. CPR-RP

Getto singolo, quadrante semi asciutto a rulli protetti, trasmissione meccanica, con anello di chiusura a pressione girevole a 360°. Realizzato nelle versioni per acqua fredda (30°C) e acqua calda (90°C) nei calibri  $\varnothing$  15 e 20 mm (1/2"-3/4"). I rulli sigillati in una capsula con liquido speciale permettono la lettura sempre nitida anche in presenza di acque impure. La trasmissione meccanica rende il contatore non frodabile da campi magnetici.

## DEU mod. CPR-RP

Einzelwasserstrahl, semi-dry Ziffernblatt mit geschützten Zählwerksrollen, mit 360° drehbarem Druck Schliessungsring. Erzeugt in der Ausführung für Kaltwasser (30°C) und Warmwasser (90°C), Innendurchmesser  $\varnothing$  15 und 20 mm (1/2" – 3/4"). Die in einer mit besonderer Flüssigkeit gefüllten Kapsel versiegelte Rolle erlauben die scharfe Ablesung, ebenso mit unsauberem Wasser. Mechanische Übertragung schützt den Zähler vom Betrug durch magnetische Felde.

## ENG mod. CPR-RP

Single jet, semi-dry dial meter with protected rolls, mechanical driving with pressure closing ring rotating at 360°. Available in sizes 1/2" and 3/4" either for cold water (30°C) and hot water (90°C). The rolls are dipped in a liquid filled chamber, allowing the reading even with unclear water. The mechanical driving allows the meter not to be tampered by magnetic fields.

## FRA mod. CPR-RP

Compteur à jet unique, cadran semi-sec, rouleaux protégés, transmission mécanique avec anneau de fermeture à pression et tournant à 360°. Fabriqué dans les versions pour eau froide (30°C) et eau chaude (90°C) dans les calibres  $\varnothing$  15 et 20 mm (1/2"-3/4"). Les rouleaux scellés dans une capsule avec un liquide spécial permettent une lecture toujours claire, même en présence d' eau impure. La transmission mécanique rend le compteur impossible de frauder par des influences magnétiques.

## ES mod. CPR-RP

Chorro único, esfera semi-seca con rodillos protegidos con anillo de cierre a presión y giratorio a 360°. Realizado en las versiones para agua fría (30°C) y agua caliente (90°C) en los calibres 15 y 20 mm. ( 1/2" - 3/4" ). Los rodillos, sellados herméticamente en una cápsula con un líquido especial, permiten una lectura siempre nítida, también en presencia de impurezas del agua. La transmisión mecánica confiere al contador la cualidad anti-fraude a los campos magnéticos.

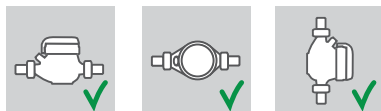
## RUS мод. CPR-RP

Одноструйный счетчик с полусухим квадрантом и защищенными роликами. Вращающееся на 360° напрессованное кольцо. Доступны версии для холодной (30°C) и горячей (90°C) воды диаметрами 15 и 20мм (1/2" – 3/4"). Ролики, помещенные в капсулу со специальной жидкостью, позволяют снимать показания даже в грязной воде. Прямая передача на механизм исключает фальсификацию при помощи внешнего магнитного поля.

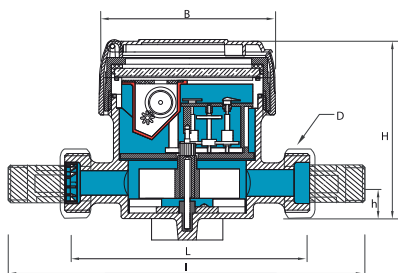
Caratteristiche tecniche - Technical features

Calibro Size	DN	mm in	15 (1/2")	20 (3/4")
Portata di sovraccarico Q <sub>4</sub> Overload flow rate		m <sup>3</sup> /h	3.12	5
	Portata permanente Q <sub>3</sub> Permanent flow rate	m <sup>3</sup> /h	2,5	4
R = 100H	Portata di transizione Q <sub>2</sub> Transitional flow rate	l/h	40	64
	Portata minima Q <sub>1</sub> Min flow rate	l/h	25	40
R = 160H	Portata di transizione Q <sub>2</sub> Transitional flow rate	l/h	25	40
	Portata minima Q <sub>1</sub> Min flow rate	l/h	15,63	25
Lettura minima Min reading		l	0,05	
Lettura massima Max reading		m <sup>3</sup>	99.999	
Pressione max ammissibile Max admissible pressure MAP		bar	16	

Posizione d'installazione  
Installation position

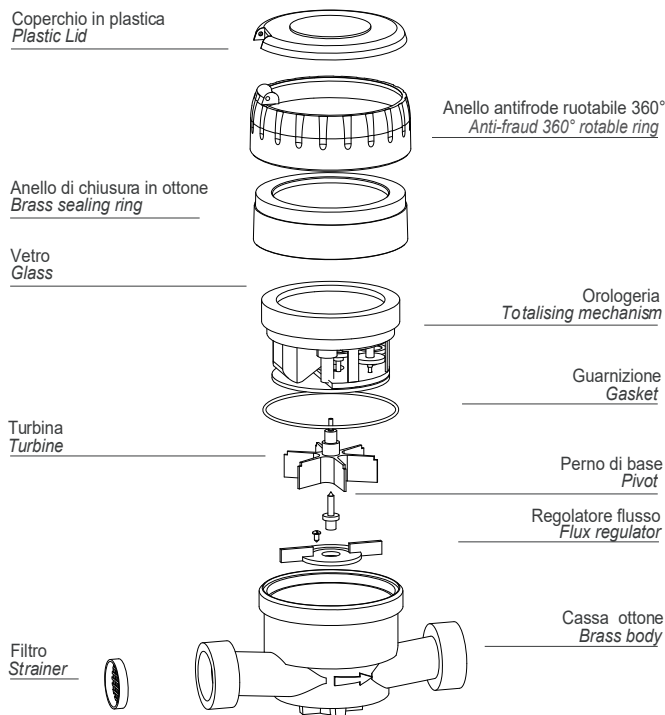


Dimensioni e pesi - Dimensions and Weights



Calibro Size	mm in	15 (1/2")	20 (3/4")	
L	mm	110	130	
l	mm	190	228	
H	mm	86	86	
h	mm	23	23	
B	mm	82	82	
D Filatura Threading	in	3/4"	1"	
Pesi Weight	con raccordi with unions	kg	0,83	1,01
	senza raccordi without unions	kg	0,69	0,80

Filettatura - Threading EN ISO 228-1:2000



Versione base - Basic version

- » MID R100-H/V 2004/22/CE
- » Disponibile in versione per acqua fredda 0°C-50°C e per acqua calda 30°C-90°C
- » Trasmissione meccanica
- » Lettura diretta su 5 rulli numeratori protetti
- » Quadrante semi-asciutto
- » Coperchio girevole a 360°
- » MID R100-H/V 2004/22/CE
- » Available for cold water 0°C-50°C and for hot water 30°C-90°C
- » Mechanical transmission
- » Direct reading on 5 numeric protected rolls
- » Semi-dry dial
- » 360° rotating lid

Su richiesta - Upon request

- » Predisposizione per montaggio sistema lancia-impulsi
- » Equipaggiato con sistema lancia-impulsi
- » Versioni MID R160-H/R100-V, MID R200-H/R100-V
- » Prearranged for pulse emitter device mounting
- » Equipped with pulse emitter device
- » Version MID R160-H/R100-V, MID R200-H/R100-V

